



# *Business Process Management & SAP ERP Roll-out Governance*

---

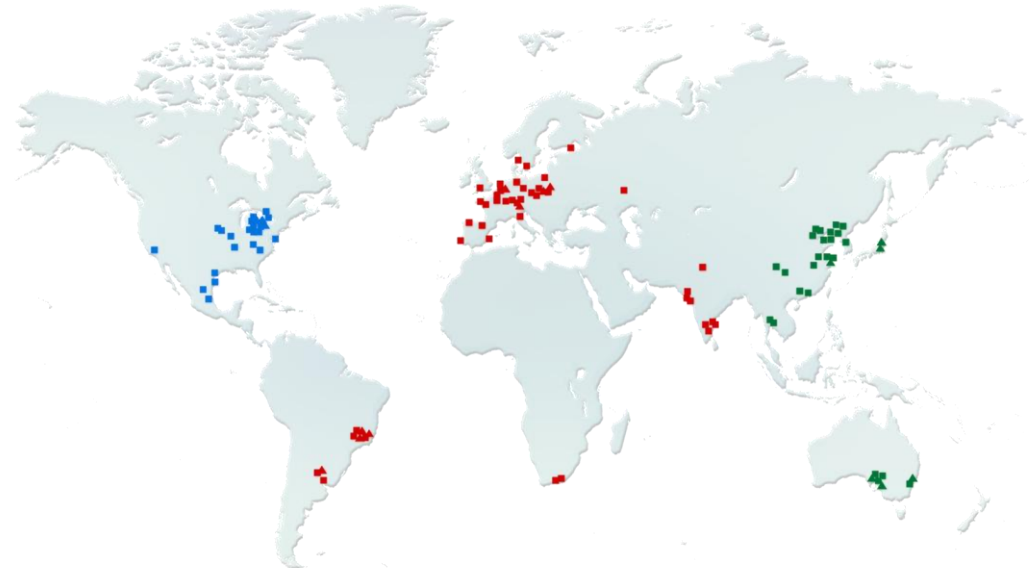
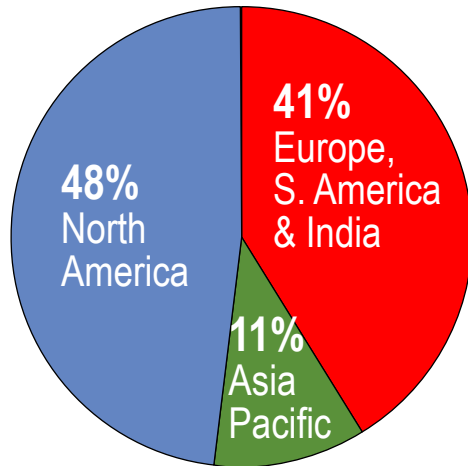
***Henk Kiewiet, Executive Director IT  
Koblenz, 29.11.2011***

- Overview Tenneco locations / SAP Systems
- BP Selection & Optimization Approach / Tools Used
- ERP Global Template roll-out strategy
- Project Team Organization & Global Business Process Governance
- Benefits and Challenges Pilot Roll-out's

# Global Supplier – Emission and Ride Control Systems



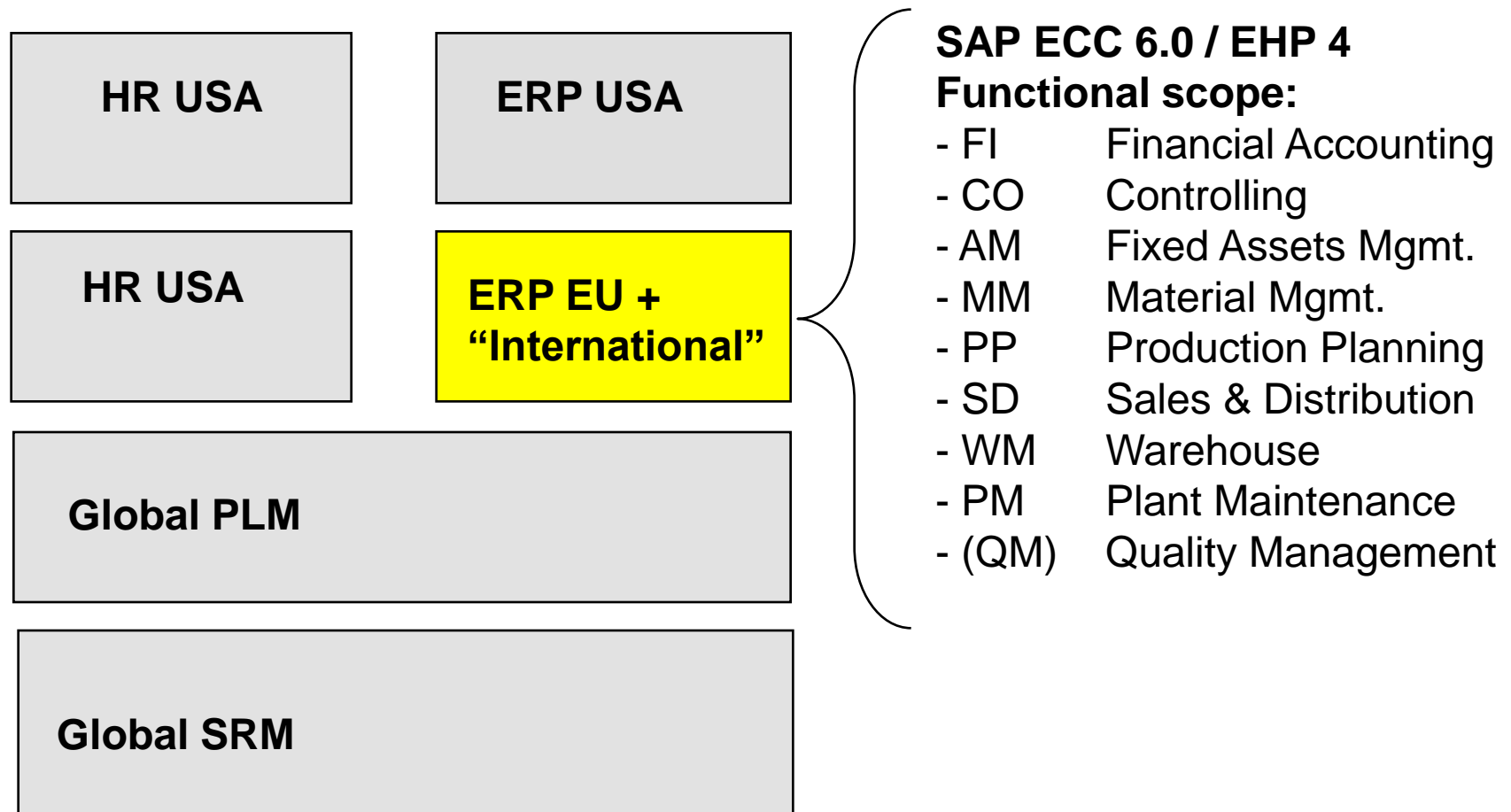
2010 Revenues – \$5,937MM



	2010	2009
Emission Control / Ride Control	64 / 36	63 / 37
Original Equipment / Aftermarket	80 / 20	78 / 22

*Approximately 22,000 employees serving customers globally from more than 80 manufacturing facilities and 14 engineering and technical centers*

# SAP Instances & ERP Roll-Out Template



# Why create a SAP Roll-out Template ?



- Business Process Standardization to:
  - Improve processes in emerging markets and reduce SOX compliance related issues
  - Opportunity to lean-out business processes.
  - Bench mark key processes across locations.
  - Be able to transfer production and personnel across locations.
  - Share support services across locations.
- Enables “Acceleration” of SAP implementations (support BRICT markets and replace obsolete legacy systems).
- Reduces Implementation Costs.
- Provides ability to effectively handle “unplanned” implementations (e.g. acquisitions).

# Process Standardization - Example Work List



647		Tx							
A	B	C		D	E	F	G	H	I
1		BUSINESS PROCESS STANDARDIZATION LIST FOR ERP TEMPLATE							
2	Outline Level	Outline Num	Task Name	SAP Sol Manager Process (Y/N)	TEH IT Review Status	Transaction Nam	Comments	TEH Global	North America Only
40	2	1.7	<b>Inbound Processing and Receipt Confirmation with Warehouse Management</b>	Y	<b>WM Open</b>			X	
41	3	1.7.1	Receive advanced shipping notification	Y	WM Open				
42	3	1.7.2	Create inbound delivery (optional)	Y	WM Open				
43	3	1.7.3	Post goods receipt	Y	WM Open				
44	3	1.7.4	Create Put-away transfer order	Y	WM Open				
45	3	1.7.5	Confirm Put-away transfer order	Y	WM Open				
46	3	1.7.6	Send proof of delivery (POD)	Y	WM Open				
47	3	1.7.7	Track and evaluate procurement process with SCEM (optional)	Y	WM Open				
48	2	1.8	<b>Inbound Processing and Receipt Confirmation without Warehouse Management</b>	Y	<b>Complete MM</b>			X	
49	3	1.8.1	Receive advanced shipping notification	Y	Complete MM				
50			Receive advanced shipping notification - ref KANBAN JIT Call	N	Complete MM				
51	3	1.8.2	Create inbound delivery (optional)	Y	Complete MM				
52	3	1.8.3	Post goods receipt	Y	Complete MM				
53			Post goods receipt - ref SAP Console		Complete MM				
54	3	1.8.4	Send proof of delivery (POD)	Y	Complete MM				
55	3	1.8.5	Track and evaluate procurement process with SCEM (optional)	Y Delete	Complete MM				
56			MASS GR into SAP PLANT from CULLINET SISTER PLANTS (CE	N	Complete MM				
57			INSPECTION BIN UPON GR via MATL MASTER "POST TO INSP S	N	Complete MM				
58			INSPECTION BIN UPON GR via CLASSIFICATION QUALITY (STR.	N	Complete MM				

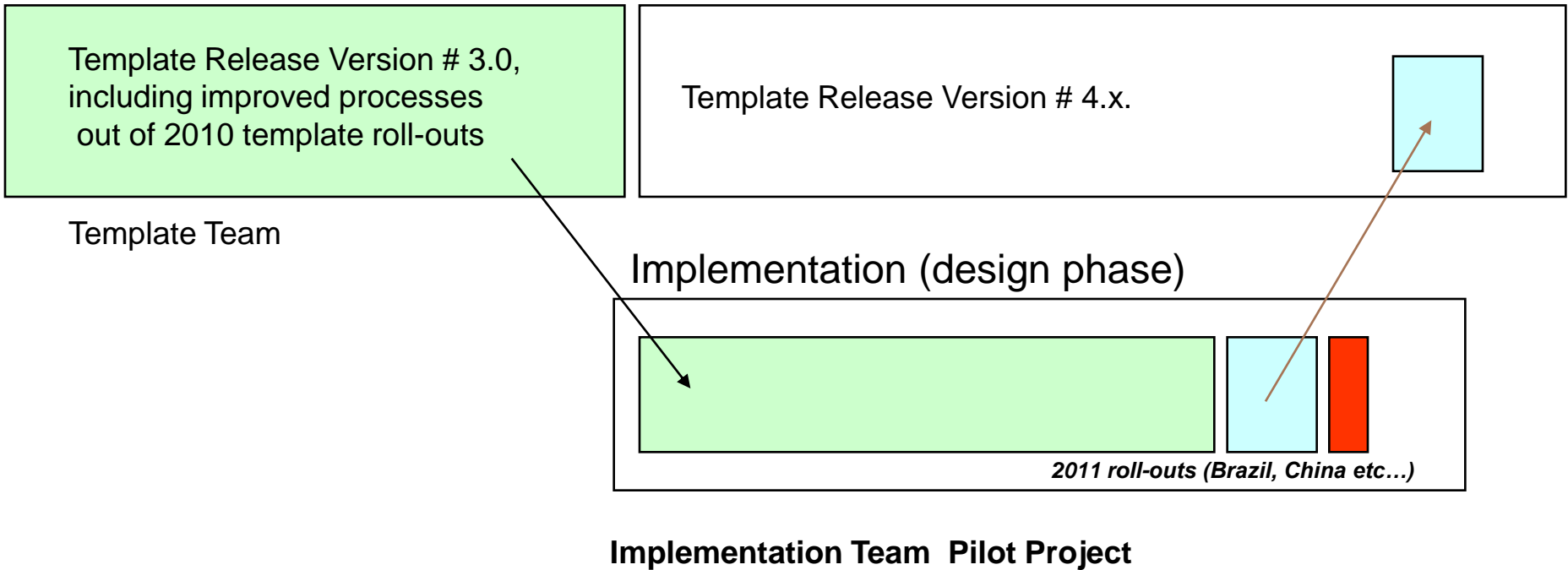
# Example Template Content






Standardized  
Business-  
Processes & re-usable  
SAP Design

**Tools Deployed:**  
**Business Process modeling (ARIS)**  
**SAP Roll-Out (Solution-Manager)**

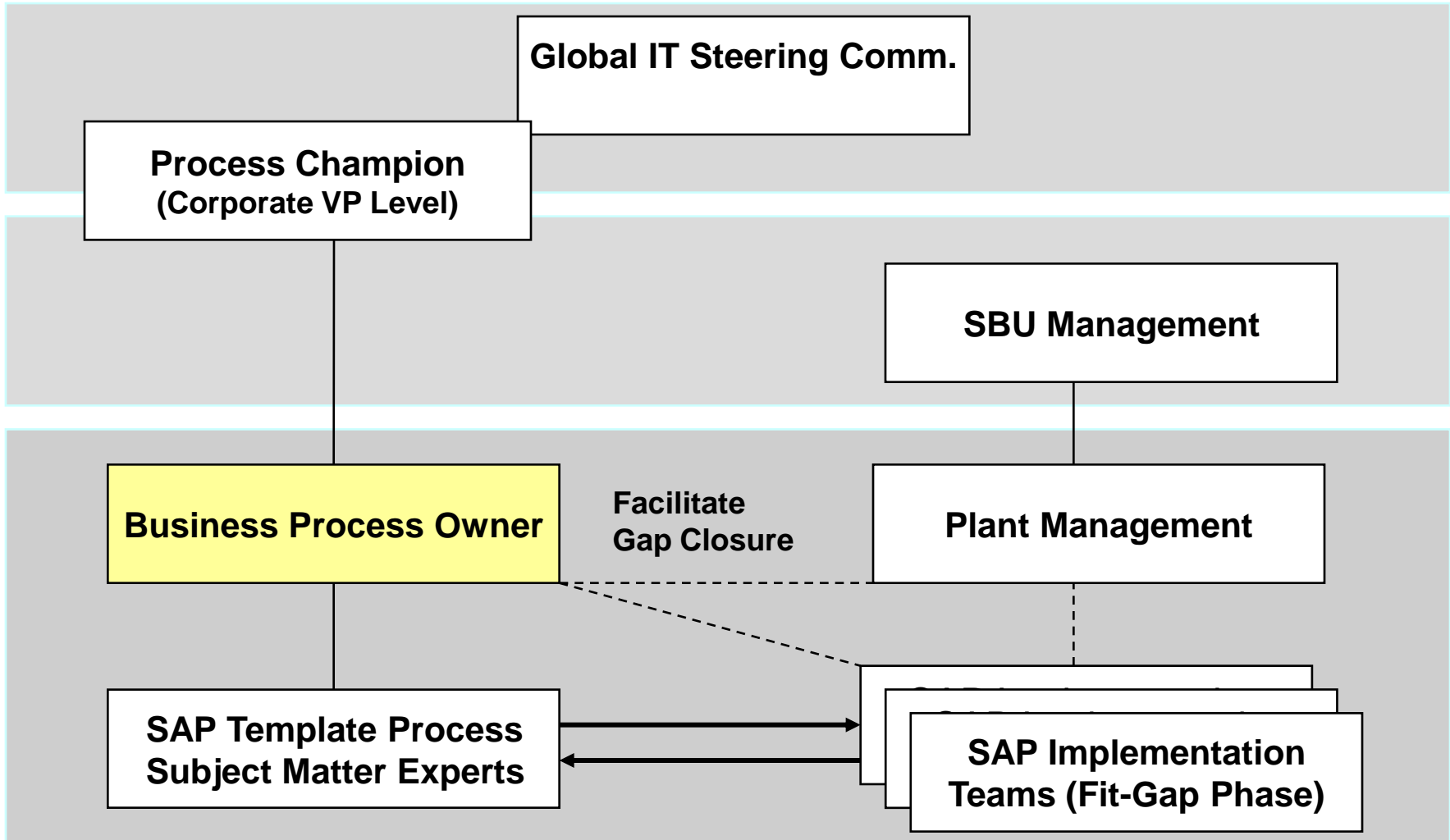
# Strategy of Template Roll-out Releases



-  = Mandatory Standardized Processes included in template
-  = Processes to be standardized in future template releases
-  = Local Specifics (e.g. Golden Tax China)



# BP Governance Model & Champions



# Implementation / Roll-Out Team

